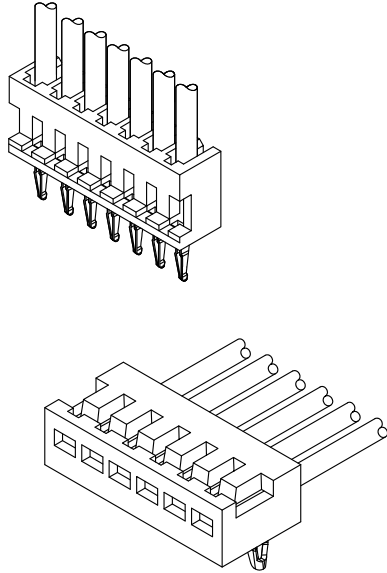


B1500 SZN CONNECTOR

2.00mm Pitch Board-in connectors



- Secure locking structure
- Low insertion force
- Suction area for picking up
- Improvement of engagement with prying

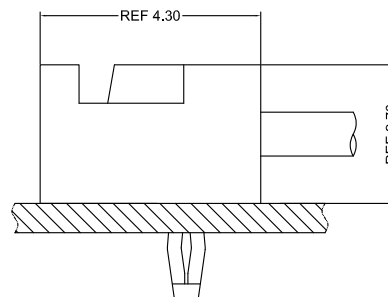
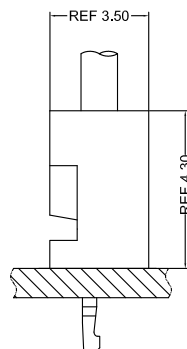
Specifications:

- Current rating: 1.0 A / AC,DC (AWG #28)
- Voltage rating: 200 V AC/DC
- Temperature range: -40°C ~ +105°C
(including temperature rise in applying electrical current)
- Contact resistance: Initial value/ 20m Ω max
Insulation resistance: 500 M Ω min
Withstanding voltage: 500 VAC/minute
Applicable wire: Conductor size/ AWG#28~#30
Insulation O.D./ 0.70 to 1.00 mm
- * Compliant with RoHS2/ REACH
- * Refer to "General Instruction and Notice when using Terminals and Connectors"
- * Contact CSG for details

Material:

Housing: PA66/UL94-V0;Color:White

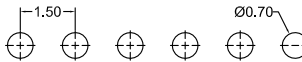
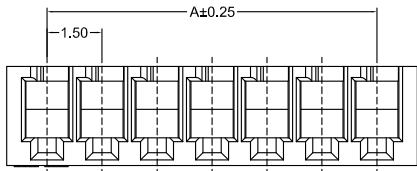
Terminal: Phosphor/ Tin-plated



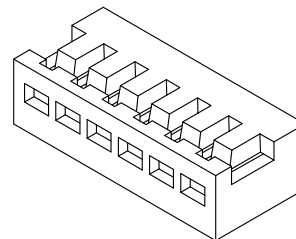
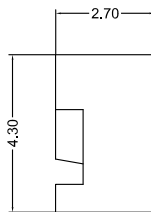
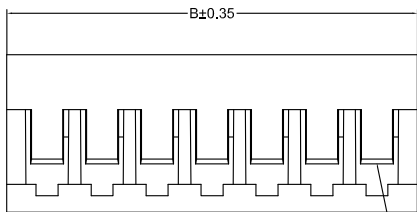
- Note: 1. The above figure is the figure viewed from the connector mounting side.
2. Tolerances are non-cumulative: ± 0.08 mm for all centers.
3. The dimensions above should serve as a guideline. Contact CSG for details.

CSG

B1500 SZN



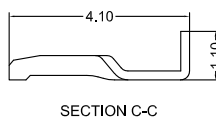
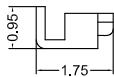
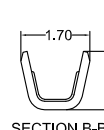
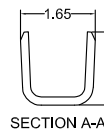
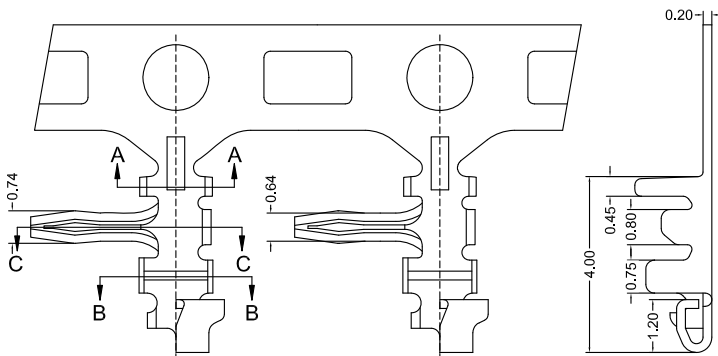
Recommended P.C.B Layout
General Tolerance±0.05



Circuit 1

B1500HM 0XX AA P6 9 001
 005=5PINS
 SPECIAL
 AA=NO Special
 Material
 P6=PA66 94V-0
 Code
 001
 Color
 9=White

CSG PART NO.	Dimension mm		Qty/BAG
	A	B	
B1500HM002AAP69001	1.50	3.70	1000PCS
B1500HM003AAP69001	3.00	5.20	1000PCS
B1500HM004AAP69001	4.50	6.70	1000PCS
B1500HM005AAP69001	6.00	8.20	1000PCS
B1500HM006AAP69001	7.50	9.70	1000PCS
B1500HM007AAP69001	9.00	11.20	1000PCS
B1500HM008AAP69001	10.50	12.70	1000PCS
B1500HM009AAP69001	12.00	14.20	1000PCS
B1500HM010AAP69001	13.50	15.70	1000PCS
B1500HM011AAP69001	15.00	17.20	1000PCS
B1500HM012AAP69001	16.50	18.70	1000PCS
B1500HM013AAP69001	18.00	20.20	1000PCS
B1500HM014AAP69001	19.50	21.70	1000PCS
B1500HM015AAP69001	21.00	23.20	1000PCS

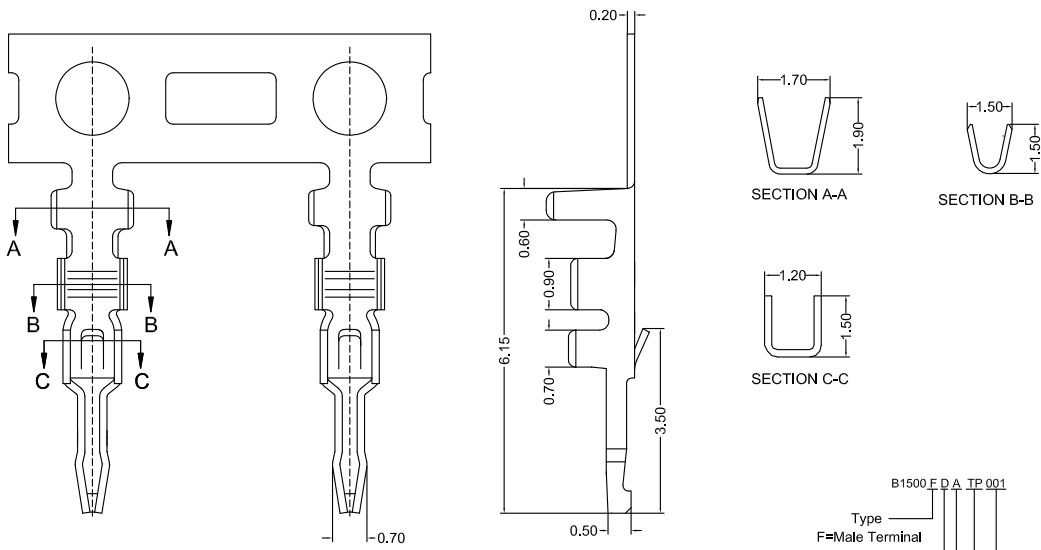


B1500 E I A TP 001
 Type
 F=Male Terminal
 SPECIAL
 T=90°
 Material
 A=Phosphor
 Finish
 TP=Tin-Plated
 Code
 001

CSG PART NO.	Wire Range	Insulation O.D.	Qty/Reel
B1500FTATP001	AWG#28-#30	1.00mm(max)	15000PCS



B1500 SZN



B1500 F D A TP 001

- Type
- F=Male Terminal
- SPECIAL
- D=180°
- Material
- A=Phosphor
- Finish
- TP=Tin-Plated
- Code
- 001

CSG PART NO.	Wire Range	Insulation O.D.	Q'ty/Reel
B1500FDATP001	AWG#28-#30	1.00mm(max)	10000PCS

