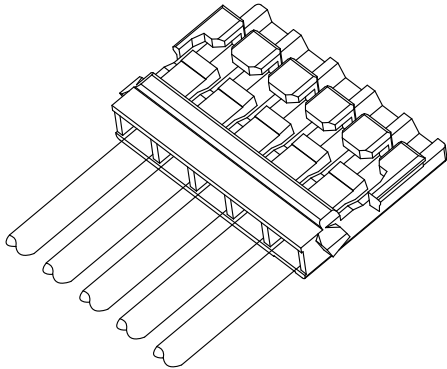


A1202 DF57 CONNECTOR

1.20mm Pitch/Disconnectable Crimp style connectors



 E529482

Specifications: _____

- Current rating: 2.0 A / AC,DC
- Voltage rating: 50 V AC/DC
- Temperature range: -40°C ~ +105°C
(including temperature rise in applying electrical current)
- Contact resistance: Initial value/ 20m Ω max
After environmental tests/20mQ max.
- Insulation resistance: 100 M Ω min
- Withstanding voltage: 500 VAC/minute
- Applicable wire: Conductor size/ AWG#32~#28
Insulation O.D./ 0.38 to 0.63 mm
- * Compliant with RoHS2/ REACH/ HF
- * Refer to "General Instruction and Notice when using Terminals and Connectors"
- * Contact CSG for details

Material: _____

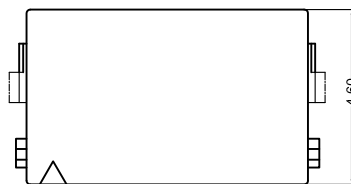
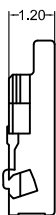
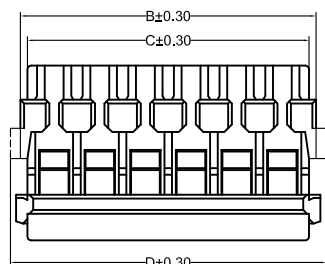
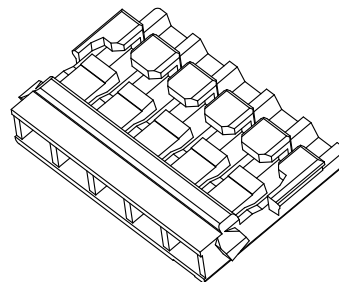
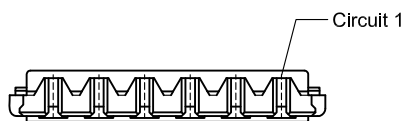
Housing: PA66/UL94-V0;Color:White

Terminal: Phosphor/ Tin-plated

- Note: 1. The above figure is the figure viewed from the connector mounting side.
2. Tolerances are non-cumulative: ± 0.08 mm for all centers.
3. The dimensions above should serve as a guideline. Contact CSG for details.

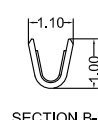
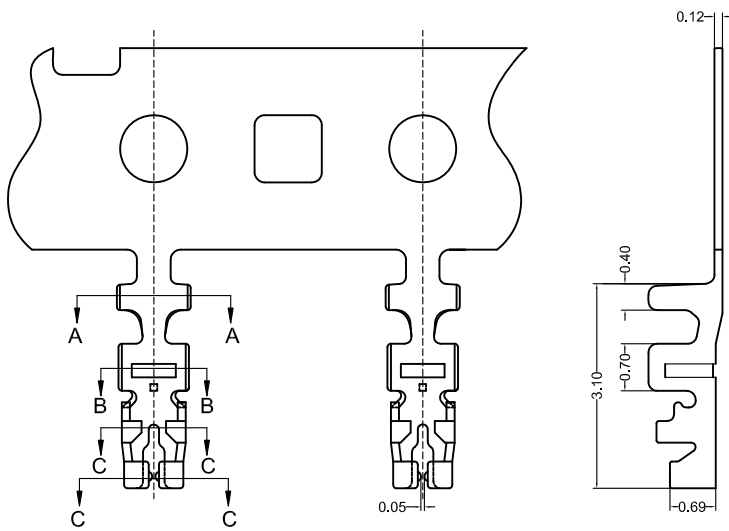
CSG

A1202 DF57

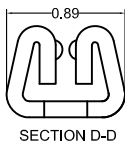
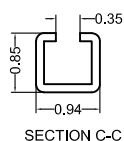


A1202HF XXX XX P6 9 005
 PIN
 005=5PINS
 SPECIAL
 AA=NO Special
 AB=Take the ear
 Material
 P6=PA66 94V-0
 Code
 005
 Color
 9=White

CSG PART NO.	Dimension mm				Q'ty/BAG
	A	B	C	D	
A1202HF002XXP69005	1.20	2.98	2.60	3.50	1000PCS
A1202HF003XXP69005	2.40	4.18	3.80	4.70	1000PCS
A1202HF004XXP69005	3.60	5.38	5.00	5.90	1000PCS
A1202HF005XXP69005	4.80	6.58	6.20	7.10	1000PCS
A1202HF006XXP69005	6.00	7.78	7.40	8.30	1000PCS



A1202 M 0 A TP 002
 Type
 M=Female Terminal
 Material
 A=Phosphor
 Finish
 TP=TIIn-Plated
 Code
 002



CSG PART NO.	Wire Range	Insulation O.D.	Q'ty/Reel
A1202M0ATP002	AWG#28-#32	0.63mm(max)	20000PCS

